



ROLLING SECURE LEARNING REMOTES with BFT MITTO AIR4 L- AIR4 L IB

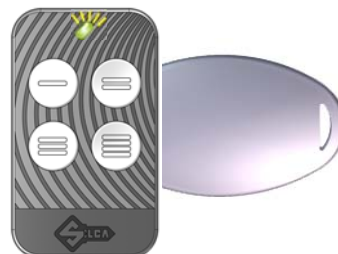
Air⁴

1- HOLD DOWN BUTTON 1 ON THE AIR4 REMOTE CONTROL.

2- AT THE SAME TIME PRESS BUTTON 4 FOUR TIMES.

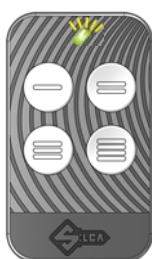


7- WAIT FOR THE "AIR4" LED TO GO ON WITHOUT FLASHING, RELEASE BUTTON AND THEN START DOUBLE FLASHING ABOUT EVERY 2 SECONDS.



3- RELEASE BOTH BUTTONS.

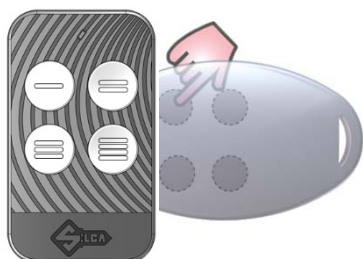
4- THE AIR4 WILL FLASH BRIEFLY ABOUT EVERY 2 SEC



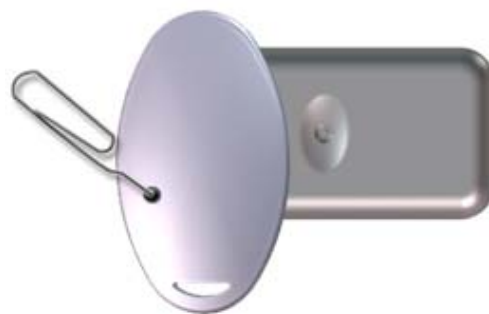
8- SIMULTANEOUSLY PRESS THE TWO BUTTONS 1 AND 2 ON THE BFT REMOTE CONTROL AND RELEASE AS SOON AS THE LED STARTS FLASHING. (TRANSMISSION OF SOURCE CODE).



5- PLACE THE REMOTE CONTROL TO BE CLONED BACK TO BACK WITH "AIR4"



NOTA : On older versions of BFT MITTO instead of pressing the two buttons simultaneously, use a pin to press the concealed button on the back of the remote control.



6- HOLD DOWN THE ORIGINAL REMOTE CONTROL BUTTON TO BE COPIED.

9- THE "AIR4" LED WILL FLASH RAPIDLY; PRESS THE BUTTON BY WHICH THE CODE WILL BE MEMORISED AND HOLD DOWN UNTIL THE LED GOES OUT.



NOTE: A PROCEDURE IS REQUIRED ON THE RECEIVER (A.L.S OR ORIGINAL PROCEDURE)