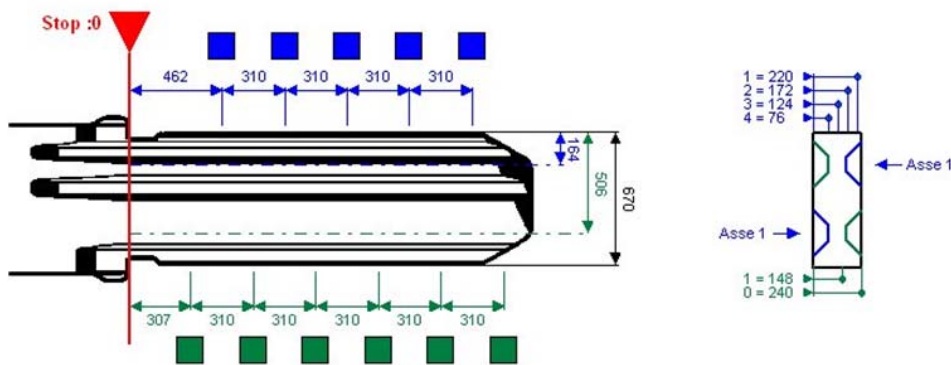


LEGEND

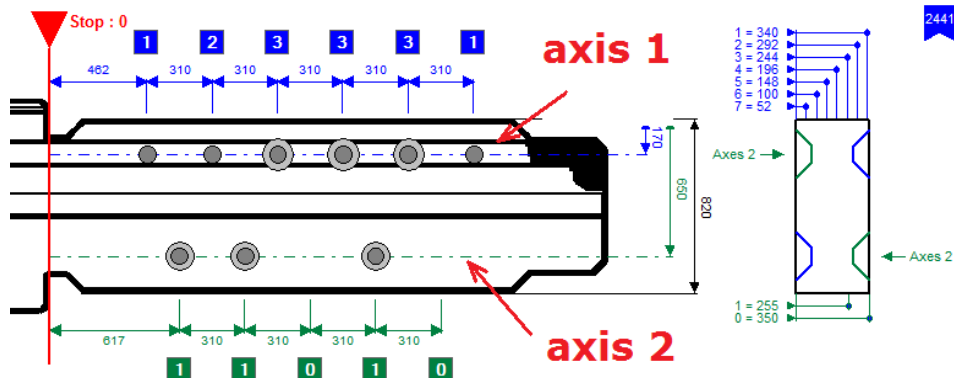
What's a **CUTTING CARD**?

- A **CUTTING CARD** is a collection of parameters for spaces, depths, cut bases, angles, references, clamps, cutters (a total of approximately 250 parameters for each key axis) needed to make a faithful copy of the cuts made on the lock system by the manufacturer.



What are the **AXES** on a cutting card?

- A cutting card may contain a minimum of 1 **AXIS** up to a maximum of 20 **AXES**. Each **AXIS** identifies a process to which the manufacturer of the lock system has associated a combination..



What's an **INDIRECT CODE**?

An indirect code is a label made up of letters and/or numbers associated to a specific lock combination. It is a practical, synthetic way of numbering all the locks made by a locksmith and usable with a given key.

Code	Cut
AB100	164523

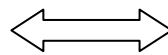
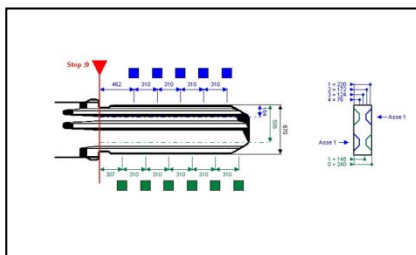
What's a **CODE TABLE**?

A **CODE TABLE** is a collection of **INDIRECT** codes assigned by a locksmith to a lock system; each code univocally identifies the cuts or combinations for each key **AXIS**.



CODE	AXIS 1	AXIS 2
0001	433123	233112
0002	243233	122231
0003	113232	442232
0004	312132	312313
0005	243323	121132

What's a **SERIES**?

A **SERIES** is the link between a **cutting card** and a **code table**, one or more key blanks, cylinder applications (vehicle, lock, etc.) and so on. In effect it tells us how many different ways a cutting card has been applied.



CODICE	CIFRATURA ASSE 1	CIFRATURA ASSE 2
0001	403123	203112
0002	243230	102231
0003	112322	442222
0004	312132	312313
0005	243232	121132



What's a **TRANSPONDER**?

A **TRANSPONDER** is an electronic circuit inserted into a glass or plastic container with an internal antenna and a memory into which specific information is written.

In the automotive industry transponders are an integral part of the immobilizer (or theft alarm) system that protects the vehicle from thieves.

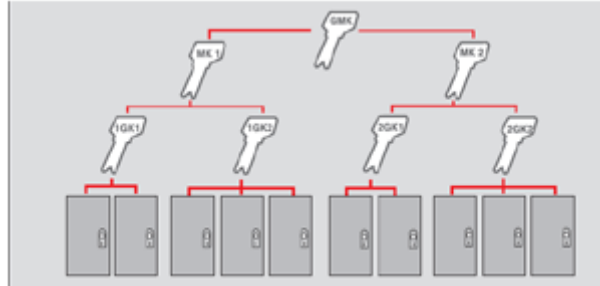


**Transmitter
responder
=
Transponder**



What's a Master Key System or **MKS**?

A Master Key System is a group of cylinders and relative keys made to exact criteria by which each key can be used to gain access to a number of places or a single place. Special software (Master Key Program) calculates the combination to associate to each cylinder-key in order to control access according to the user's specifications.



What's **SILCA SOFTWARE INTERFACE (SSI)** for?

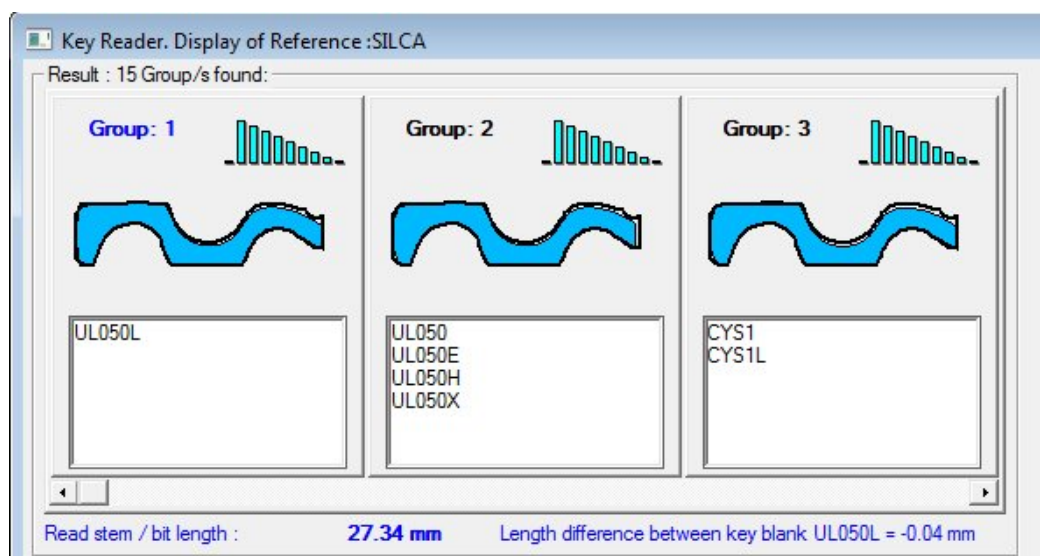
Programs for generating Master Keys typically export a ".DAT" format file compatible with SILCA programs. With this file and the SILCA SOFTWARE INTERFACE (SSI) key marking and cutting can be automated on SILCA key-cutting machines. Manual entering of codes or marking texts is no longer necessary.



What's a **SILCA PROFILE SEARCH**?

Silca has invented a device (OPTIKA is the latest) to read and recognize profiles for flat, bit and dimple keys. It can build up an image of the key profile which a powerful search engine compares with over 10000 images relating to 40 years of SILCA references.

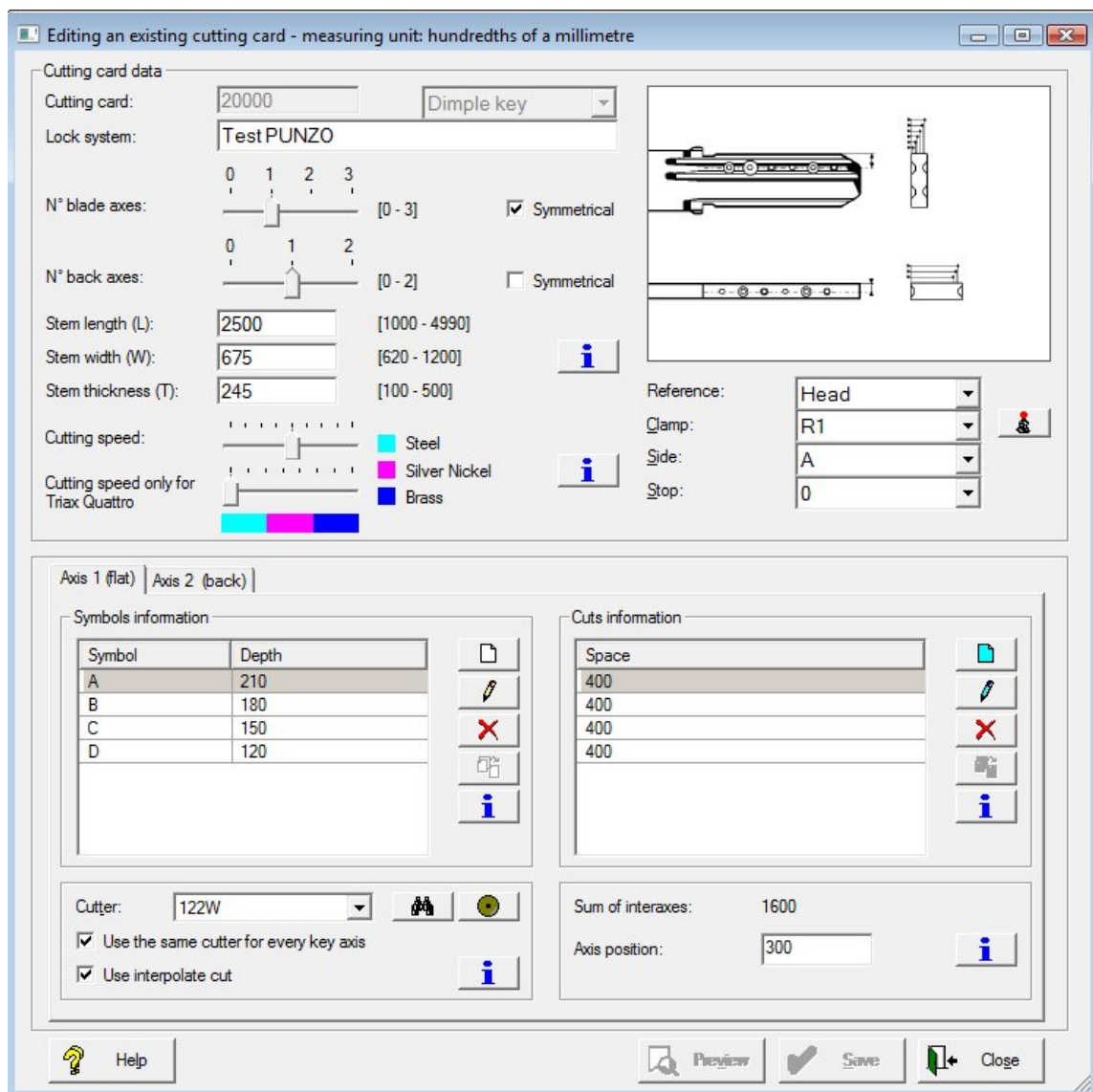
All SILCA keys within the parameters compared are presented in graphic form so that the operator can make a final assessment of the best one to copy an original key.



What's a **CODEMAKER**?

CODEMAKER is a function of SILCA KEY PROGRAMS for the creation of USER CUTTING CARDS. It allows the operator to enter dimensions for cutting operations, as Silca does.

Cutting cards can be created for FLAT, DIMPLE, BIT and DOUBLE BIT keys quickly and simply. These cutting cards can be connected to a USER'S SERIES and a customer CODE TABLE independently, without SILCA's assistance.





What is **DECODING**?

DECODING a key by means of a SILCA electronic key-cutting machine is used to copy a key when the data card is known.

Differently from a copy of an original, with decoding you can make a copy identical to a new original key, i.e. without the defects caused by wear and mechanical deformation.

What is a **DATABASE**?

A DATABASE is a container that holds the data collected by Silca in over 30 years about all the keys in the world.

What are **MODULES**?

MODULES in the Silca Key Programs are functions which are independent by nature and in their usefulness and can be enabled or disabled according to the "customer's" demands.